

## DEKORATIVO 3D

**Melaminico** used to develop structures, doors, open elements, tops, buffer side panels and even for the coating of grooves. Laminated Dekorativo 3D wid. 6 cm Used for columns, open half-columns and open portals.

### ROVERE SHERWOOD



CHIARO - 1S1



CASTANO - 1S3



SCURO - 1S2

### ROVERE DOGATO

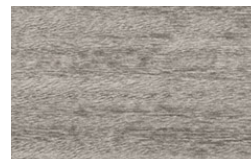


BIANCO - 1P0



GRIGIO - 1P1

### EUCALIPTO SABLÈ



GRIGIO - 1SA



CANALETTO - 1SB



TERMOCOTTO - 1SC

### NODATO SPACCATO



BIONDO - 1NA



TABACCO - 1NB

### EUCALIPTO SABLÈ



CENERE - 1A1



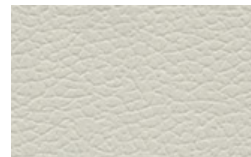
TORTORA - 1A2



CRETA - 1A3



OLTREMARE - 1A4



PRIMOFIORE EFFETTO  
PELLE CANAPA - 1PC



REFLEX EFFETTO  
METALLIZZATO - 1RE

Available only for bases and open wall units tops and buffer side panels

## HPL UNICOLOR

Used to develop structures, doors, open elements, tops, buffer side panels and even for the coating of grooves. Thick. 6 cm used for columns, open half-columns, portals and tops.



**ROVERE WAFER - TK2**



**ROVERE MONET - TK3**



**ROVERE SLAVONIA - TK6**



**QUERCIA GRIGIA - TK4**



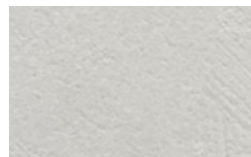
**NOCE SAVOIA - TKG**



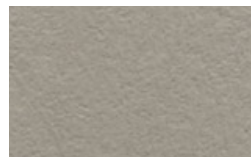
**ARDESIA - TKF**



**BOTTICINO - TK1**



**MALTA GRIGIA - TKE**



**MALTA CANAPA - TKD**

This is a matt material that offers technologically advanced performance thanks to its surface characteristics. Used to develop structures, doors, open elements, tops, buffer side panels and even for the coating of grooves. Tops can also be developed with a recessed basin.



**BIANCO MALÈ - TFA**



**GRIGIO EFESO - TFB**



**CASTORO OTTAWA - TFC**



**CACAO ORINOCO - TFF**



**GRIGIO LONDRA - TFD**



**GRIGIO BROMO - TFE**



**ROSSO JAIPUR - TFH**



**VERDE COMODORO - TFG**



Low light reflectivity,  
extremely matt surface



Thermal healing of  
microscratches



Resistance to dry heat



High resistance to acid  
solvents household reagents



Resistance to scratches  
and abrasion



Anti-fingerprint



Enhanced anti-bacterial  
properties



Soft touch

## SOFT TOUCH COLOURS

Matt laquered colors with soft touch surface. **Compatible with the same colors of the tops with integrated basin made in Fenix.** Used to develop structures, doors, open elements, tops, buffer side panels and even for the coating grooves.



**BIANCO MALÈ - 8FA**



**GRIGIO EFESO - 8FB**



**CASTORO OTTAWA - 8FC**



**CACAO ORINOCO - 8FF**



**GRIGIO LONDRA - 8FD**



**GRIGIO BROMO - 8FE**



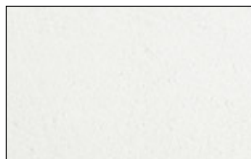
**ROSSO JAIPUR - 8FH**



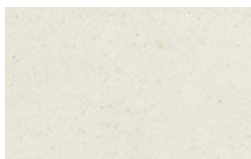
**VERDE COMODORO - 8FG**

## ECOMALTA®

This is a natural material applied using traditional techniques, in a series of steps. Used to develop structures, doors, tops, bufferside panels and even for the coating of grooves. Tops can also be developed with a recessed basin.



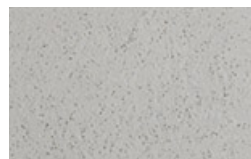
**BIANCO** - TCA



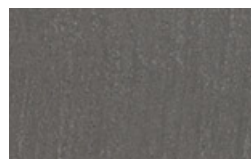
**GHIACCIO** - TCF



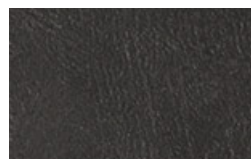
**CORDA** - TCB



**GRIGIO CHIARO** - TCC



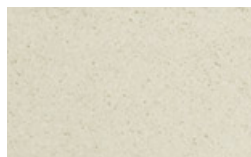
**ARDESIA** - TCD



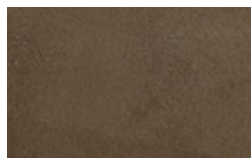
**ANTRACITE** - TCE

## ECOMALTA® “LE TERRE”

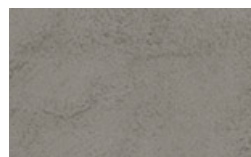
This is a natural material applied using traditional techniques, in a series of steps, **with the addition of colored natural pigments.** Used to develop structures, doors, tops, bufferside panels and even for the coating of grooves. Tops can also be developed with a recessed basin.



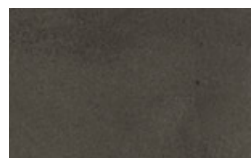
**LIMO** - TCP



**SIENA** - TCQ



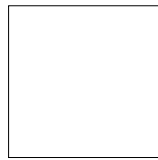
**ARGILLA** - TCR



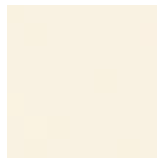
**TORBA** - TCS

# COLOURS

Matt (O.) and gloss (L.)



**BIANCO**  
L. 30B - O. 20B



**BIANCO  
CONCHIGLIA**  
L. 375 - O. 275



**CAPPUCCINO**  
L. 388 - O. 288



**CANYON**  
L. 390 - O. 290



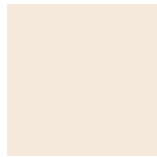
**NEBBIA**  
L. 391 - O. 291



**CENERE**  
L. 392 - O. 292



**TITANIO**  
L. 393 - O. 293



**ROSA CIPRIA**  
L. 313 - O. 213



**ROSA SCURO**  
L. 3A0 - O. 2A0



**GIALLO CURRY**  
L. 308 - O. 208



**GIALLO  
ZAFFERANO**  
L. 3A1 - O. 2A1



**ARANCIO  
ZUCCA**  
L. 309 - O. 209



**ARANCIO**  
L. 322 - O. 222



**ARAGOSTA**  
L. 377 - O. 277



**ROSSO FUOCO**  
L. 321 - O. 221



**ROSSO  
RUBINO**  
L. 319 - O. 219



**ROSSO  
MELANZANA**  
L. 320 - O. 220



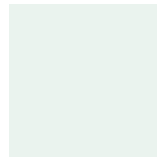
**GLICINE**  
L. 371 - O. 271



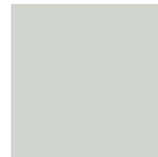
**LAVANDA**



**MIRTILLO**  
L. 372 - O. 272



**BIANCO  
GHIACCIO**  
L. 330 - O. 230



**VERDE GHIAIA**  
L. 331 - O. 231



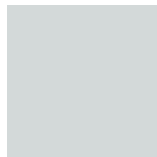
**VERDE  
POLVERE**  
L. 334 - O. 234



**VERDE MELA**  
L. 324 - O. 224



**VERDE  
MUSCHIO**



**AZZURRO  
FREDDO**  
L. 3A5 - O. 2A5



**AZZURRO  
CIELO**  
L. 335 - O. 235



**BLU PAVONE**  
L. 3A6 - O. 2A6



**BLU LAGUNA**  
L. 3A7 - O. 2A7



**BLU PASTELLO**  
L. 340 - O. 240



**BLU ARTICO**  
L. 337 - O. 237



**BLU  
ELETTRICO**  
L. 338 - O. 238



**CACAO**  
L. 305 - O. 205



**CAFFÈ**  
L. 304 - O. 204



**MARRONE  
HAVANA**  
L. 379 - O. 279



**GRIGIO  
CHIARO**  
L. 3A8 - O. 2A8



**GRIGIO LUCE**  
L. 307 - O. 207



**GRIGIO PERLA**  
L. 333 - O. 233



**GRIGIO  
LAVAGNA**  
L. 3A9 - O. 2A9

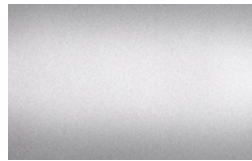


**GRIGIO  
GRAFITE**  
L. 302 - O. 202



**NERO**  
L. 303 - O. 203

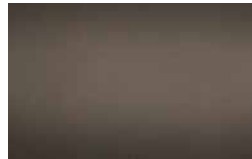
Metallic colours



**ALLUMINIO METALLIZZATO**  
L. 3M1 - O. 2M1



**BRONZO METALLIZZATO**  
L. 3M4 - O. 2M



**CRETA METALLIZZATO**  
L. 3M6 - O. 2M6



**ANTRACITE METALLIZZATO**  
L. 3M5 - O. 2M5

Versions available  
in 45 colors



**COLORE OPACO LISCIO**



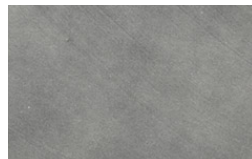
**NUANCE OPACO  
ROVERE DOGATO  
LACCATO**



**COLORE LUCIDO LISCIO**

## METAL COLOURS

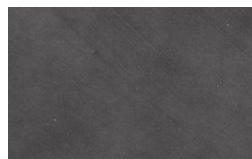
**Lacquered Metals** Matt lacquered with metallic components (without heavy metals), applied using traditional techniques in various steps.



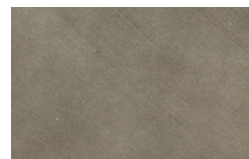
**ACCIAIO - 2MA**



**TITANIO - 2MC**



**PIOMBO - 2MB**



**BRONZO - 2MD**